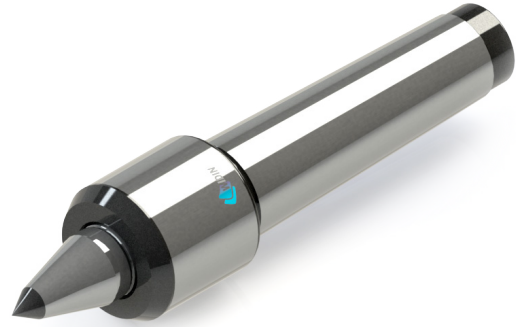
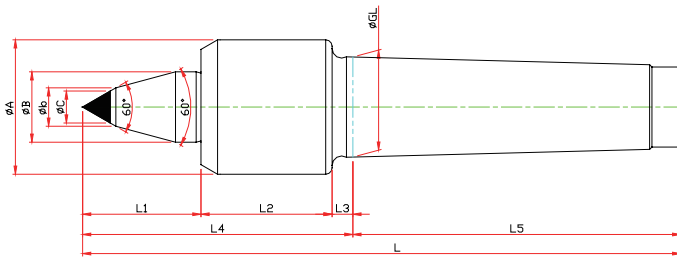


D50BC-TYPE

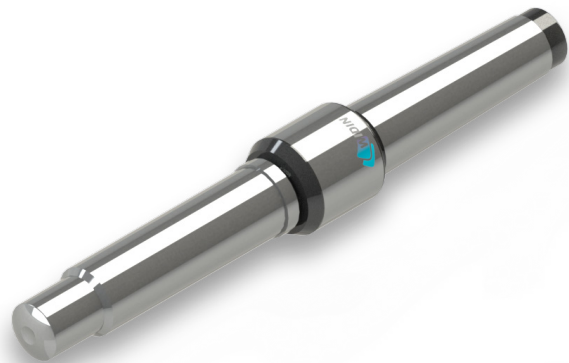
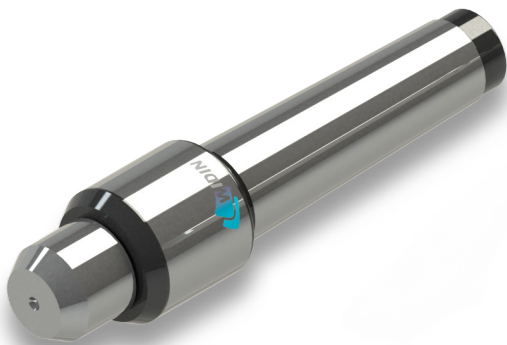
※ SHAFT 확장(바이트 간섭 최소화) SHAFT EXTENTION(Minimize the bite-interference)
 ※ 초경타입 Carbide Type



Model	Order Number	Morse Taper	Dimension											Weight MAX.	R.P.M MAX.	Run Out
			GL	A	B	b	L1	L2	L3	L4	L5	C	L			
LC-3D50BC	083350	NO.3	23.825	34	22	10	25	38	5	72	81	8	153	400	4800	0.003
LC-4D50BC	083450	NO.4	31.267	42	22	12	36	41	6.5	83.5	102.5	10	186.5	800	3800	0.003
LC-5D50BC	083550	NO.5	44.399	58	32	16	53	60	6.5	119.5	129.5	14	249	1600	3400	0.005

D50 SPECIAL

※ 사용자의 조건에 따라 주문, 제작 Customized-special production for user's condition



HD-TYPE

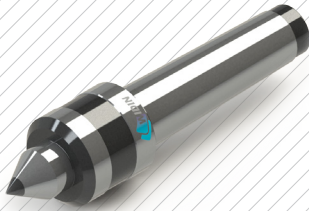
- 보급형 라이브센터
- 범용 선반사용에 적합
- CAP 회전방식(이물질 유입 방지)

- Economical Live Center
- For Wide-use lathe
- CAP Rotation Type(Prevention of the inflow of foreign substance)



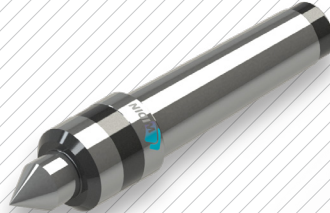
HDC TYPE

초경타입
Carbide Type



HDS TYPE

바이트 간섭을 줄이기 위한 몸체 최소화
Minimized Body for less bite interference



HDSC TYPE

바이트 간섭을 줄이기 위한 몸체 최소화
/ 초경타입
Minimized Body for less bite interference /
Carbide Type



HDSTH TYPE

바이트 간섭 최소화
Minimize the bite-interference

